

GENERAL FLOOR PLAN NOTES:

1. ALL DIMENSIONS ARE TO CENTERLINE UNLESS OTHERWISE INDICATED.
2. ALL EXISTING WALLS SHALL HAVE LETTERS WITH 1/4" MINIMUM LINE STROKE BY 1/8" ON CONTRACTING BACKGROUND PER ALL APPLICABLE BUILDING CODES. THIS SHALL BE ELECTRICALLY SUPPLEMENTED TO THE PLAN BY CLEARLY VISIBLE WINDOWED THE BUILDING'S OCCUPANCY.
3. NOTES TO MECHANICAL, ELECTRICAL, AND PLUMBING DRAWINGS FOR ADDITIONAL REQUIREMENTS AND SPECIFICATIONS.
4. PORTABLE FIRE EXTINGUISHERS SHALL BE PROVIDED AS ACCORDANCE WITH LOCAL FIRE CODES.
5. LOCATED EXTINGUISHERS SHALL HAVE FLAME SPRAY INDEX OF NOT MORE THAN 25 AND A SMOKE-DEVELOPED INDEX OF NOT MORE THAN 100.
6. ALL EXISTING BOARD WALLS TO BE REPEL CHECKED, SAVED, AND REFINISHED.
7. ACCESSIBLE ROUTE SHALL BE PROVIDED AS ACCORDANCE WITH ICC/ANSI 117.1, 2010 ADA STANDARDS.
8. ALL ACCESSIBLE CONTROL OPERATING MECHANISMS AND INDICATORS SHALL COMPLY WITH SECTION 308 OF ICC/ANSI 117.1, AND 2010 ADA STANDARDS.

LEGEND:

- | | | | |
|--|--|--|--|
| | EXISTING EXTERIOR YARD | | NEW SOFFIT ABOVE |
| | EXISTING ITEMS/WALLS | | NEW EXTERIOR DECOR AND FINISH TREATMENT - SEE SHEET A2.0 |
| | NEW PARTITIONS - SEE SHEET A1.0 & SEE WALL TYPES SHEET | | DOOR MARK - SEE SHEET A2.1. NUMBERS NOT SHOWN ARE NOT USED |
| | NEW PARTIAL HEIGHT WALL WITH STEEL SUPPORT POSTS WHERE OCCURS IN PLAN A1.0 | | WINDOW MARK - SEE SHEET A2.1 |
| | NEW PARTIAL HEIGHT WALL WITH STEEL SUPPORT POSTS WHERE OCCURS IN PLAN A1.0 | | NOTE: SEE KITCHEN EQUIPMENT DRAWINGS FOR ADDITIONAL INFORMATION & SEE SHEET A1.0 FOR DIMENSIONS & WALL TYPES |

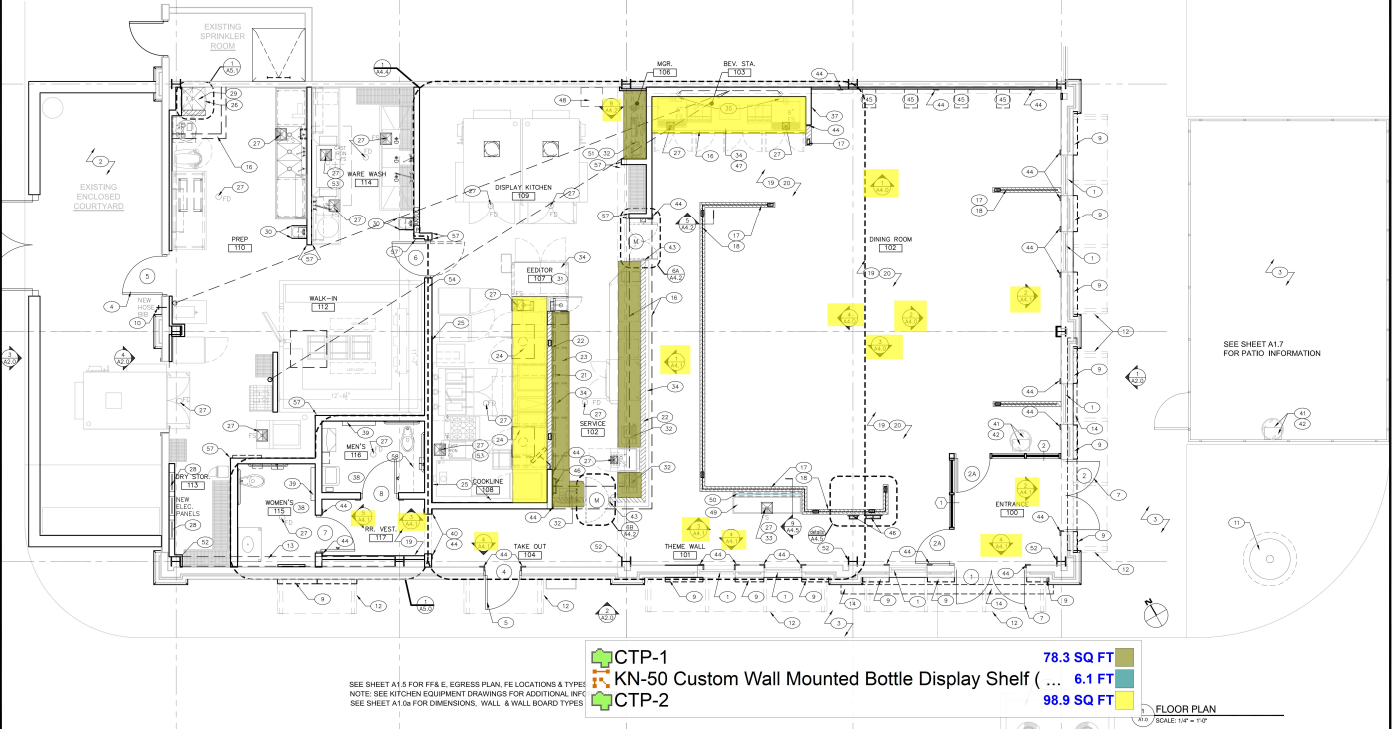
FLOOR PLAN KEY NOTES:

1. STOREFRONT TYPICAL - SEE SHEETS A2.0
2. EXIST EXTERIOR YARD - WALL & GATES
3. CONCRETE PATIO OR WALKWAY
4. REAR SERVICE DOOR FRAME & HARDWARE - SEE SHEET A4.1
5. WIND WOOD/GLASS DOOR - TAKEOUT DOOR, ANY/ON EXPRESS DOOR - SEE SHEET A6.1
6. WIND WOOD/GLASS PATIO DOOR - SEE SHEET A6.1
7. WIND WOOD/GLASS ENTRANCE DOORS - SEE SHEET A6.1
8. GREASE INTERCEPTOR - SEE PLUMBING SHEETS AND/OR CIVIL SHEET
9. MOUNTED DECOR PANELS @ EXTERIOR WALL - FINISH CONCEALED F.A.T. BLOCKING AS REQ'D - SEE SHEETS A2.0
10. EXTERIOR HOSE 88 (2) IN LOCKED BOX - SEE PLUMBING SHEETS
11. WIND WOOD/GLASS WITH (1) ON-THE-HOOR LIGHT FIXTURES - SEE SHEETS A1.1, A1.2, & ELECTRICAL SHEETS FOR ADDITIONAL INFORMATION
12. WIND WOOD/GLASS METAL FINISHES W/BRACKETED BY GC
13. EXIST EXTERIOR STEEL W/BRACKETING
14. ILLUMINATED TENANT SIGN ABOVE BY SIGN VENDOR (SEPARATELY) - GC COORD. FOR BLOCKING & ELEC. REQUIREMENTS. SEE SHEET A2.0
15. NOT USED
16. SOFFIT ABOVE - SEE SHEET A1.0/2.0 FOR SOFFIT PLAN (MILLWORK FINISHES)
17. NEW LOW WALL EQUIPMENT @ F-107 FINISHED A1.0 - "DARK WOODWORK FINISHES"

18. BOLD LINE INDICATES EXTENT OF 1 1/2" DIA. OF MAIN STEEL PIPE RAILING, FITTINGS AND FLANGES @ TOP OF EXTERIOR LOW WALLS WHERE INDICATED - SEE ELEVATIONS, DETAILS A & SHEET A3.0 FOR ADDITIONAL INFORMATION
19. SEE ELEVATION ELEVATIONS FOR FINISH LOCATIONS - SEE SHEET A4.0 FOR FINISH INFORMATION
20. 4" CONC SLAB BY GC OVER 6" W/AL VAPOR BARRIER - SEE STRUCTURAL DWG
21. MENU BOARDS BY OWNER - DASHED ABOVE - SIGN VENDOR/OWNER TO SUPPLY FROM FACT ORG. / STRUCTURE ABOVE
22. SERVICE COUNTER & BE WALL - SEE DETAIL A1/A4.2
23. CUSTOM COUNTERTOP BY KES
24. CUTTING BOARD - BY KES - FINAL SIZE & QUANTITY T.B.O. BY OWNER - SEE SHEET A1.0 FOR ADDITIONAL INFORMATION
25. STAINLESS STEEL WALL PANELS @ SEE AND BOOK OF COORDLINE OVER 5.0" THICKNESS EQUIPMENT BEHIND TO TOP OF FLOOR
26. HOT WATER HEATER - SEE PLUMBING SHEETS
27. FLOOR SINK, FLOOR DRAIN, FUNNEL FLOOR DRAIN AS INDICATED - SEE PLUMBING SHEETS
28. ELECTRIC PANELS BY GC - SEE ELECTRICAL SHEETS
29. MOP SINK - SEE DETAIL A1/A5/2 AND PLUMBING SHEETS
30. MEDICAL S/S SHAVEN GUARDS - SEE DETAIL A1/A1.0
31. SEE SHEET A4.0 FOR DISPLAY KITCHEN FINISHES AND SEE SHEET A4.0 FOR DISPLAY KITCHEN ELEVATIONS, MILLWORK
32. CONFIRM PROS GRAMMET SIZE & LOCATION IN COUNTERTOP WITH KITCHEN EQUIPMENT SUPPLIER/OWNER

33. 12" X 12" FLOOR SINK @ BOTTLE COOLER - SEE KITCHEN EQUIPMENT & PLUMBING SHEETS
34. SEE COUNTERTOP PLANS ON SHEET A4.4 FOR SERVICE COUNTER/EXPEDITOR COUNTERTOP & TAKE-OUT COUNTERTOP, BEVERAGE STATION COUNTERTOP & USED, CONCRETE/FRASH COUNTERTOP
35. 4" PVC CONDUITS WITH LONG SWEET BENDER RUNNING FROM BEHIND THE SODA DISPENSERS STUBBED OUT FROM THE FINISHED WALL APPROX. 4' UP, UP THE CHASE WALL AND OVERHEAD BACK TO THE CEILING ABOVE THE BAG-IN-BODY LOCATION - SEE KITCHEN SHEETS
36. NOT USED
37. THERMOSTAT SENSORS IN DINING ROOM TO BE MOUNTED @ 8'-0" A.F.F. WHERE INDICATED - SEE MECHANICAL SHEETS
38. SEE SHEET A5.0 FOR RESTROOM MILLWORK & RESTROOM ELEVATIONS
39. BABY CHANGE STATION - SEE SHEET A5.0
40. CUSTOM 55 GAL TRASH DRUM ON (4) 3" CASTERS - SEE TRASH DRUM DETAIL A1/A4.2
41. CUSTOM 55 GAL TRASH DRUM ON (4) 3" CASTERS - SEE TRASH DRUM DETAIL A1/A4.2
42. MILLWORK - WALL MOUNT TRAY RETURN SHELF - SEE DETAIL A1/A4.2
43. MILLWORK - DOUBLE ACTION HINGE AT GATE DOOR - SEE DETAIL A1/A4.2 & A1/A4.2
44. MILLWORK - DECORATIVE 1/4" WOOD PLASTERS OR WOOD TRIM - SEE INTERIOR ELEVATIONS
45. MILLWORK - CUSTOM WALL MOUNT DECOR DISPLAY SHELVES - SEE DETAIL A1/A4.2

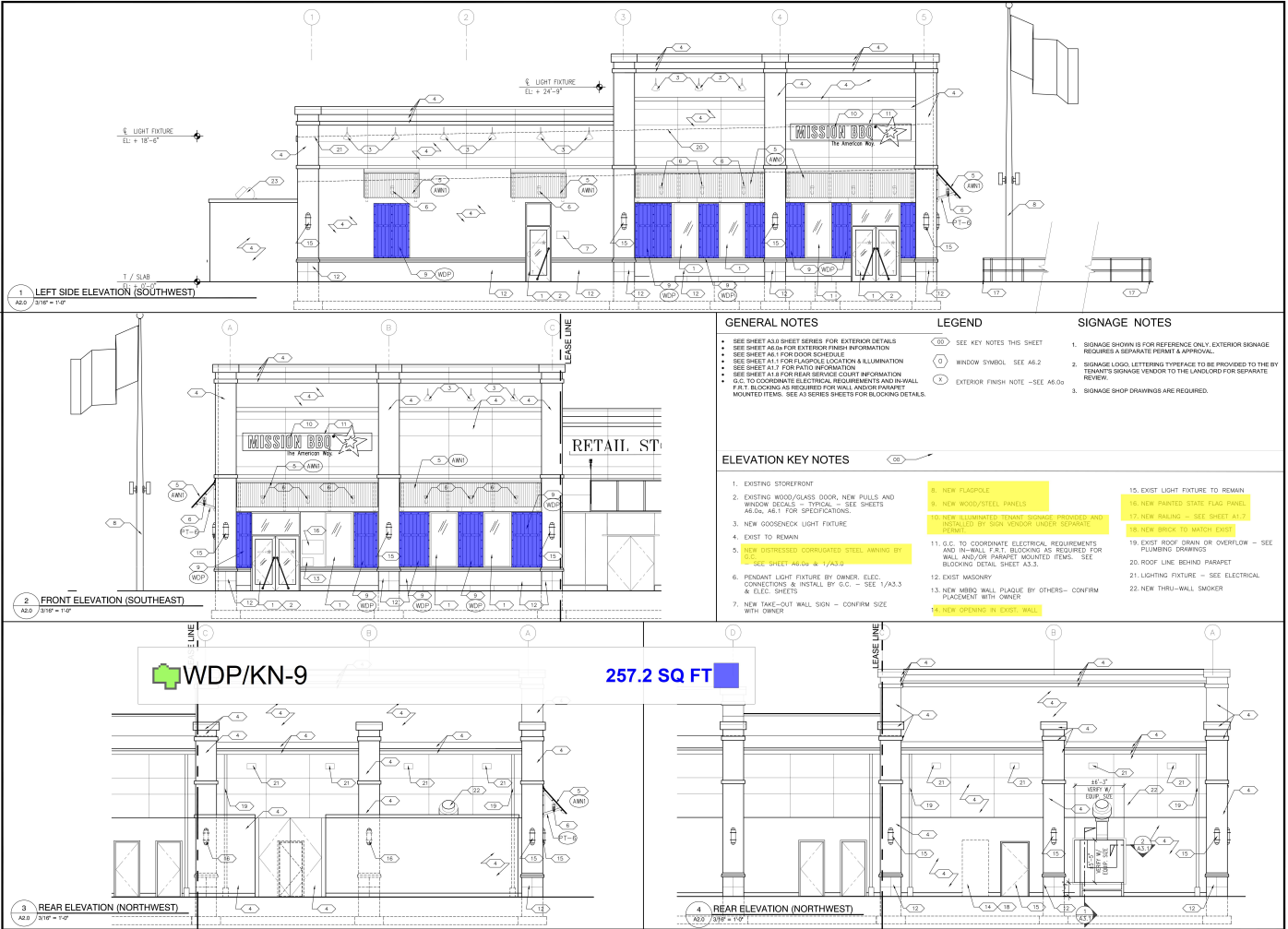
46. MILLWORK - CUSTOM MENU BOARDS - SEE DETAILS A1.7 & A1.11 ON SHEET A1.0
47. MILLWORK - CUSTOM BEVERAGE STATION CABINET ON 4" STAINLESS STEEL LEGS - SEE DETAIL A1/A4.2
48. A/P/RACK
49. CUSTOM BAK GALVANIZED STEEL ICE TUB ON STAND BY KES
50. MILLWORK - CUSTOM WALL MOUNT BOTTLE DISPLAY SHELF - SEE DETAIL A1/A4.2
51. MILLWORK - CUSTOM PLAN COUNTER & SHELVES - SEE DETAIL A1/A4.2 & MANAGER STATION
52. PAINT COAT - SEE ELEVATIONS & FINISH SCHEDULE ON SHEET A1.0
53. CAST IRON FLOOR SINK
54. ANGLE PULL STATION - SEE MECHANICAL SHEETS
55. STAINLESS STEEL SWEATING
56. NOT USED
57. 14" X 14" CORNER GUARD BY GC TYP. ALL OUTSIDE CORNERS OF KITCHEN. FULL HEIGHT TO CEILING OR 10 FT. MAX. SEE DETAIL ON SHEET A5.3
58. STORAGE CABINET ABOVE - SEE A5.0 FOR MOUNTING HEIGHT
59. EXISTING DOOR TO REAR
60. NEW TRANSFORMER - SEE ELEC. DRAWINGS
61. WATER SOFTENER



CTP-1
 KN-50 Custom Wall Mounted Bottle Display Shelf (... 6.1 FT
 CTP-2
78.3 SQ FT
98.9 SQ FT

SEE SHEET A1.0 FOR FF & E. EGRESS PLAN, FF. LOCATIONS & TYPES
 NOTE: SEE KITCHEN EQUIPMENT DRAWINGS FOR ADDITIONAL INFO
 SEE SHEET A1.0 FOR DIMENSIONS, WALL & WALL BOARD TYPES

FLOOR PLAN
 SCALE: 1/4" = 1'-0"



1 LEFT SIDE ELEVATION (SOUTHWEST)
 A2.0 3/16" = 1" = 0"

2 FRONT ELEVATION (SOUTHEAST)
 A2.0 3/16" = 1" = 0"

3 REAR ELEVATION (NORTHWEST)
 A2.0 3/16" = 1" = 0"

GENERAL NOTES

- SEE SHEET A2.0 SHEET SERIES FOR EXTERIOR DETAILS
- SEE SHEET A2.0 FOR EXTERIOR FINISH INFORMATION
- SEE SHEET A2.1 FOR DOOR SCHEDULE
- SEE SHEET A2.1 FOR PARTO INFORMATION
- SEE SHEET A2.1 FOR SIGNAGE LOCATION & ILLUMINATION
- SEE SHEET A2.8 FOR BEAM SERVICE COURT INFORMATION
- G.C. TO COORDINATE ELECTRICAL REQUIREMENTS AND IN-WALL F.I.T. BLOCKING AS REQUIRED FOR WALL AND/OR PARAPET MOUNTED ITEMS. SEE AS SERIES SHEETS FOR BLOCKING DETAILS.

LEGEND

- SEE KEY NOTES THIS SHEET
- WINDOW SYMBOL SEE A6.2
- EXTERIOR FINISH NOTE - SEE A6.0

SIGNAGE NOTES

- SIGNAGE SHOWN IS FOR REFERENCE ONLY. EXTERIOR SIGNAGE REQUIRES A SEPARATE PERMIT & APPROVAL.
- SIGNAGE LOGO, LETTERING TYPEFACE TO BE PROVIDED BY THE TENANT'S SIGNAGE VENDOR TO THE LANDLORD FOR SEPARATE REVIEW.
- SIGNAGE SHOP DRAWINGS ARE REQUIRED.

ELEVATION KEY NOTES

- EXISTING STOREFRONT
- EXISTING WOOD/GLASS DOOR, NEW PULLS AND WINDOW DECALS - TYPICAL - SEE SHEETS A6.0 & A6.1 FOR SPECIFICATIONS.
- NEW GOODNECK LIGHT FIXTURE
- EXIST TO REMAIN
- NEW SPRINGED CORRUGATED STEEL AWNING BY G.C. SEE SHEET A2.0 & 17/A3.0
- PENDANT LIGHT FIXTURE BY OWNER, ELEC. CONNECTIONS & INSTALL BY G.C. - SEE 17/A3.3 & ELEC. SHEETS
- NEW TAKE-OUT WALL SIGN - CONFIRM SIZE WITH OWNER
- NEW FLAGPOLE
- NEW WOOD/STEEL PANELS
- NEW ILLUMINATED TENANT SIGNAGE, PROVIDED AND INSTALLED BY SIGN-OUTDOOR UNDER SIGNAGE PERMIT
- G.C. TO COORDINATE ELECTRICAL REQUIREMENTS AND IN-WALL F.I.T. BLOCKING AS REQUIRED FOR WALL AND/OR PARAPET MOUNTED ITEMS. SEE BLOCKING DETAIL SHEET A3.3
- EXIST MASONRY
- NEW MBRD WALL PLAZA BY OTHERS - CONFIRM PLACEMENT WITH OWNER
- EXIST LIGHT FIXTURE TO REMAIN
- NEW PAINTED STATE FLAG PANEL
- NEW RAILING - SEE SHEET A1.7
- NEW BRICK TO MATCH EXIST
- EXIST ROOF DRAIN OR OVERFLOW - SEE PLUMBING DRAWINGS
- ROOF LINE BEHIND PARAPET
- LIGHTING FIXTURE - SEE ELECTRICAL
- NEW THRU-WALL SMOKER

WDP/KN-9

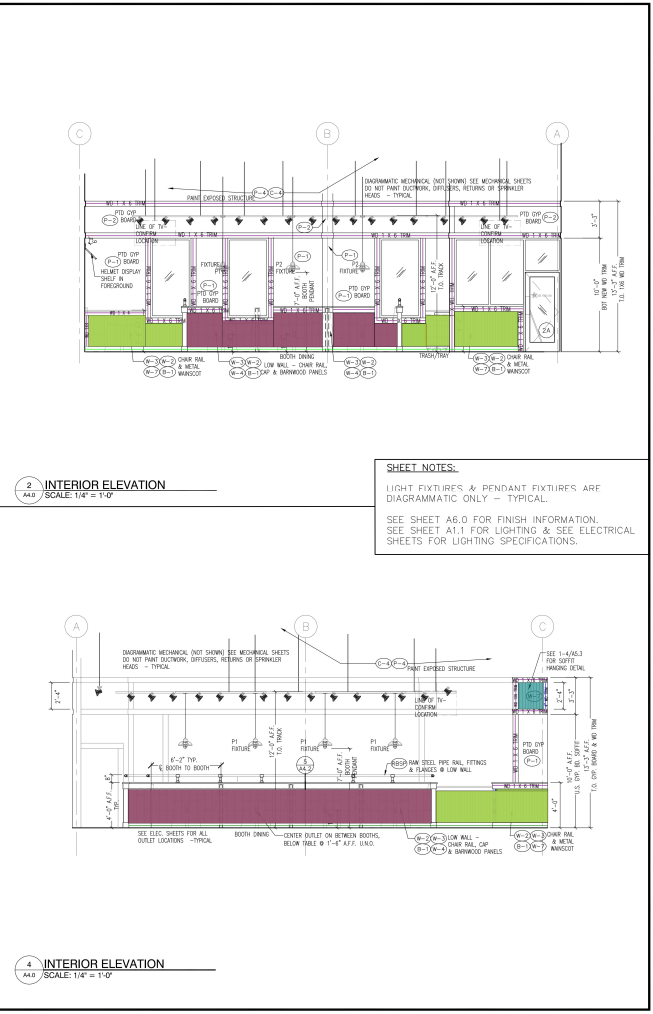
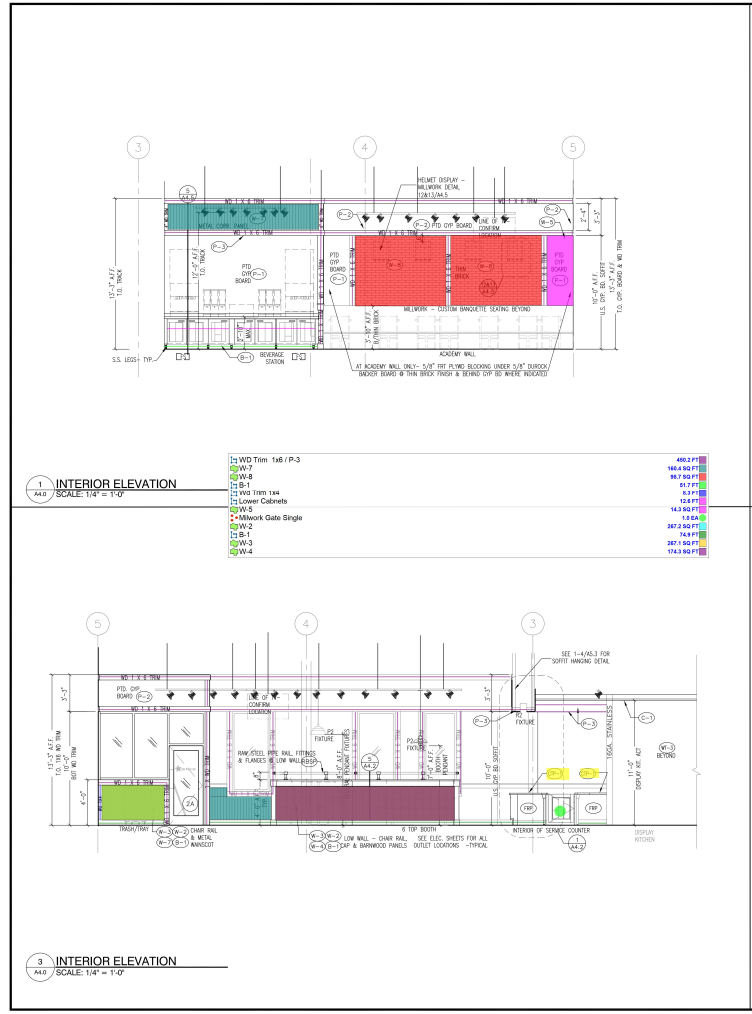
257.2 SQ FT

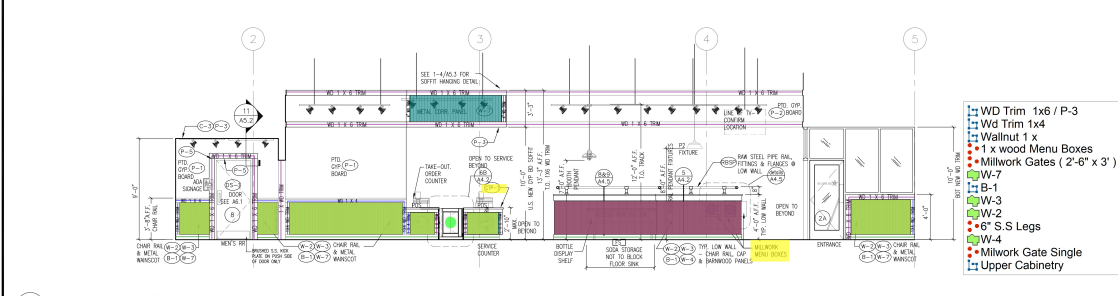
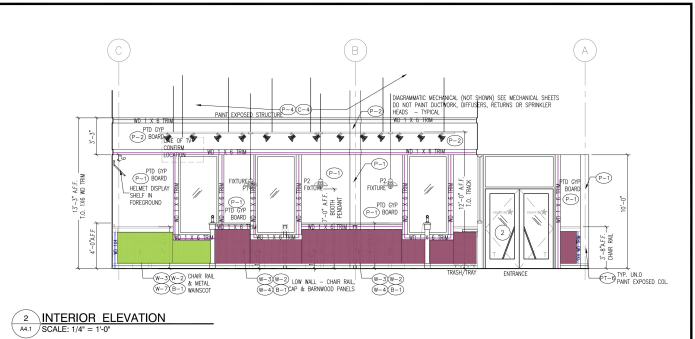
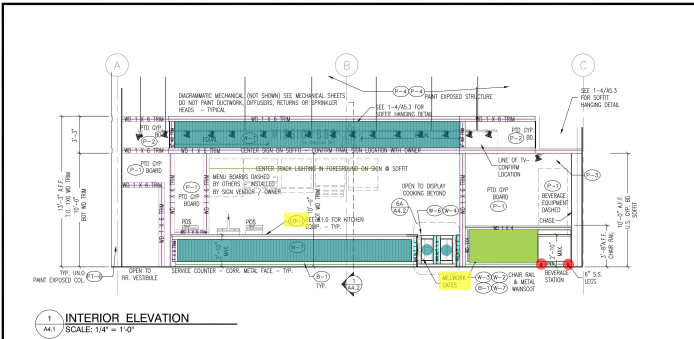


DATE: _____
 BY: _____
 CHECKED BY: _____
 PROJECT NO.: _____
 DRAWN BY: _____
 CHECKED BY: _____

PROJECT NO.: 19017
 DRAWN BY: HLT/LK
 CHECKED BY: JMS
 DATE: 10/20/19

A4.0



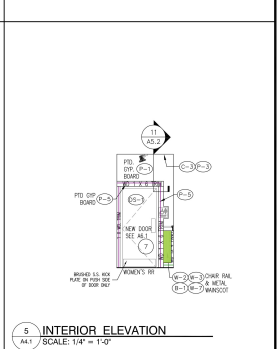
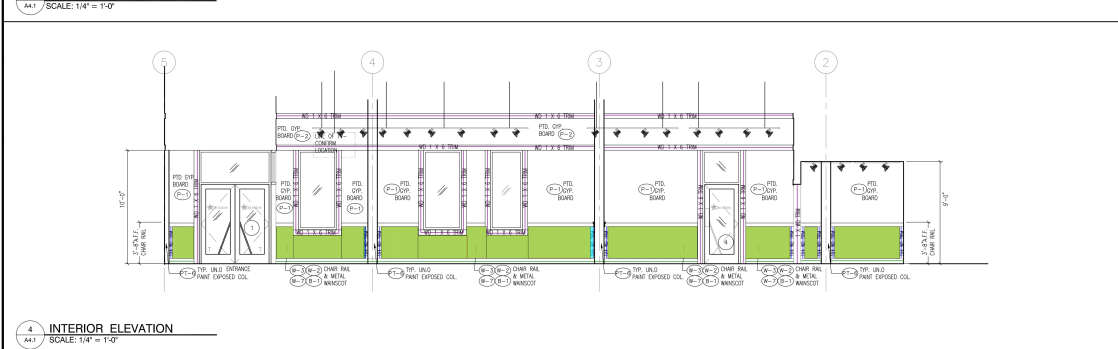


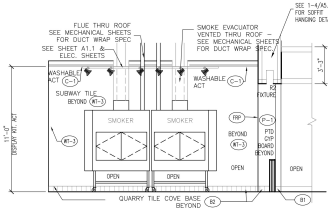
- WD Trim 1x6 / P-3
- WD Trim 1x4
- Walnut 1 x4
- 1 x wood Menu Boxes
- Milwork Gates (2'-6" x 3') Double swing
- W-1
- W-2
- W-3
- W-4
- 6" S.S Legs
- Milwork Gate Single
- Upper Cabinetry

SHEET NOTES

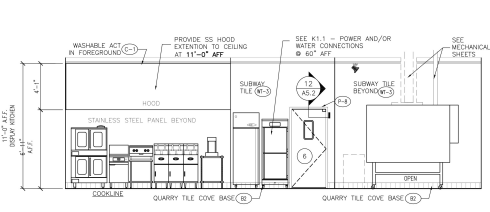
DIMENSIONS & FINISHES ARE TO FACE UNLESS NOTED OTHERWISE - TYPICAL
 SEE SHEET A4.1 FOR FINISH INFORMATION
 SEE SHEET A4.1 FOR LIGHTING & SET ELECTRICAL SHEETS FOR LIGHTING SPECIFICATIONS

596.0 FT
82.6 FT
9.9 FT
2.0 EA
2.0 EA
344.2 SQ FT
161.6 FT
338.0 SQ FT
338.3 SQ FT
2.0 EA
111.2 SQ FT
1.0 EA
14.8 FT





1 INTERIOR ELEVATION
SCALE: 1/4" = 1'-0"



2 INTERIOR ELEVATION
SCALE: 1/4" = 1'-0"

*MILLWORK & KES - SEE SHEETS T1.1 & A6.0 FOR ADDITIONAL MILLWORK & INFORMATION.

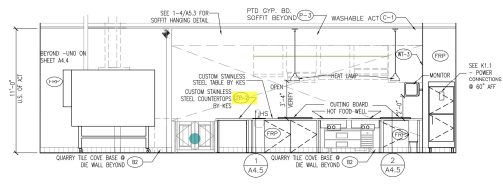
ALL JOINTS, ANNULAR SPACES, OR OPENINGS INTO HOLLOW OR INACCESSIBLE AREAS ARE TO BE CLOSED TO 1/32 INCH OR LESS. PROPER CONSTRUCTION OF CABINETS WILL PREVENT CRACKS AND VOIDS TO INACCESSIBLE SPACES, AND WILL SEAL OR PAINT ANY RAW WOOD SURFACES

NOTE: LIGHT FIXTURES ARE DIAGRAMMATIC ONLY - SEE ELECTRICAL SHEETS

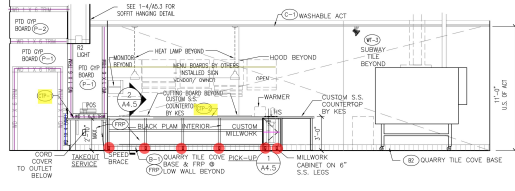
GC COORDINATE WITH KES FOR HEAT LAMP INSTALL TO BE CENTERED ABOVE KES CUTTINGBOARDS

DISPLAY KITCHEN & SERVICE COUNTER DIE WALLS BY G.C.

SEE SHEET A4.4 FOR COUNTERTOPS & MILLWORK PLAN

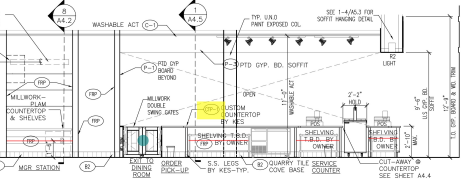


3 INTERIOR ELEVATION
SCALE: 1/4" = 1'-0"

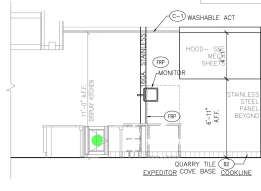


*MILLWORK - SEE T1.1
4 INTERIOR ELEVATION
SCALE: 1/4" = 1'-0"

- Millwork Gates (2'-6" x 3') Double swing 2.0 EA
- WD Trim 1x6 / P-3 46.5 FT
- WD Trim 1x4 2.8 FT
- Lower Cabinets 1.4 FT
- Upper Cabinetry 26.6 FT
- Shelving T.B.D 17.7 FT
- Millwork Gate Single 1.0 EA
- 6" S.S Legs 6.0 EA



*MILLWORK - SEE T1.1
5 INTERIOR ELEVATION
SCALE: 1/4" = 1'-0"



6 INTERIOR ELEVATION
SCALE: 1/4" = 1'-0"

NOTE: THE SERVICE COUNTER CUT-OUTS AND SERVICE COUNTER EQUIPMENT ARE SPECIFIC TO GRAND RAPID, MI

PLUMBING FIXTURE & TOILET ACCESSORIES SCHEDULE	INSTALL @ TYPICAL MOUNTING HEIGHTS - H.C. - A.D.A. SEE ELEVATIONS ON THIS SHEET
1 LAVATORY	SEE PLUMBING SHEETS
2 UNDERCOUNTER LAV. BOWL, IN CUSTOM COUNTERTOP	SEE PLUMBING SHEETS
3 WALK-IN CLOSET - WOMEN'S RR	SEE PLUMBING SHEETS
4 WC WATER CLOSET - MEN'S RR	SEE PLUMBING SHEETS
5 WC WATER CLOSET - WOMEN'S RR	SEE PLUMBING SHEETS
6 WATER CLOSET	SEE PLUMBING SHEETS
7 URINAL	SEE PLUMBING SHEETS

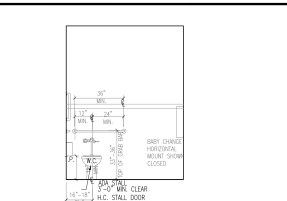
TOILET ROOM ACCESSORY NOTES
1. PROVIDE 3/4" x 1/2" x 1/2" METAL BRACKETS IN WALLS FOR ALL TOILET ACCESSORIES & LAVATORIES. ALL FIXTURES MUST BE MOUNTED AT HEIGHTS CONFORMING TO ADA GUIDELINES AND AS INDICATED ON THIS SHEET.
2. VERIFY 21"-0" CLEAR TURNING DIAMETER ON T-HAIRED TURNING SPACE W/ ACTUAL FIXTURES. PRE-DRILL & SUPPORT SHALL BE CUT REMOVED BRUSH TO RAMP FACE OF SUPPORT & FLUSH W/ WALL SURF.
3. ACCESSORIES BELONGING TO MANUFACTURER'S UNFINISHED CONDITION. MAINTAIN COVERS ON JARS UNTIL INSTALLATION IS COMPLETE. FINISH: BRUSHED STAINLESS STEEL AND SERRATED PLATING. (SEE SCHEDULE NOTED)
4. PROVIDE COVERED WASTE RECEPTACLE IN WOMEN'S RESTROOM AND WC SHALES. WOMEN'S PAPER TOWEL & SOAP DISPENSERS PROVIDED AND INSTALLED BY OWNER PER ADA MOUNTING HEIGHTS. SUGGESTED LOCATIONS FOR THESE DISPENSERS ARE SHOWN IN PLAN ON THIS SHEET. HOWEVER, GO TO LAYOUT LOCATIONS WITH OWNER PRIOR TO INSTALLATION.

TOILET ROOM GENERAL NOTES
1. SEE PLUMBING SHEETS FOR LAV, W.C. & URINAL MODEL FOR BOTH MEN & WOMEN'S RESTROOM.
2. SEE SHEET A6.0 FOR WALK-IN CLOSET, STALL PARTITIONS AND STALL DOORS SPECIFICATIONS.
3. SEE SHEET A6.0 FOR RESTROOM FINISHES INDICATED WITH DUAL NOTES IN ELEVATIONS ON THIS SHEET.
4. PROVIDE A RETAIL NON-COMPLIANT RESTROOM URINAL AS SHOWN ON SHEET A6.1.
5. PROVIDE RESTROOM ENTRANCE DOOR FRAME & HARDWARE, AS INDICATED SHEET A6.1.
6. PROVIDE LOCK STOPS FOR ALL DOORS IN THIS PROJECT TO INDICATE WALK-IN STALL DOORS.
7. REFER TO SHEETS A6.0 & A6.3 FOR RESTROOM WALLBOARD AND FINISHES.

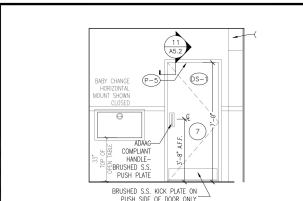
GRAB BAR DETAIL N.T.S.

WOMEN'S RR FINISHES	MEN'S RR FINISHES

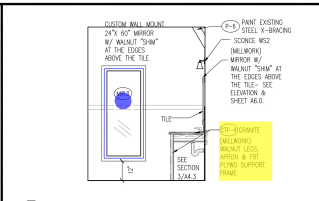
NOTE: PROVIDE MOUNTING HEIGHTS - H.C. - A.D.A. PER ICC/ANSI A117.1-2010 - AT ALL RESTROOM FIXTURES & ACCESSORIES



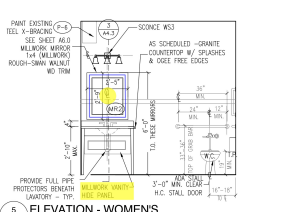
2 ELEVATION - WOMEN'S
A6.0 / SCALE: 3/8" = 1'-0"



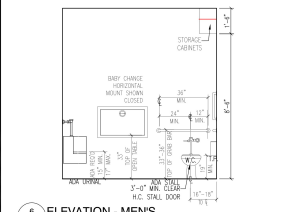
3 ELEVATION - WOMEN'S
A6.0 / SCALE: 3/8" = 1'-0"



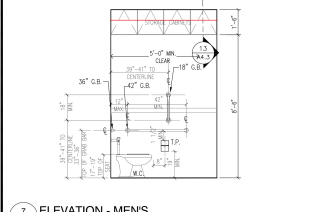
4 ELEVATION - WOMEN'S
A6.0 / SCALE: 3/8" = 1'-0"



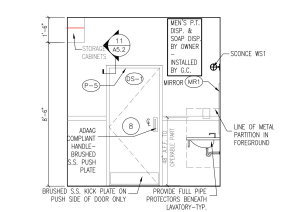
5 ELEVATION - WOMEN'S
A6.0 / SCALE: 3/8" = 1'-0"



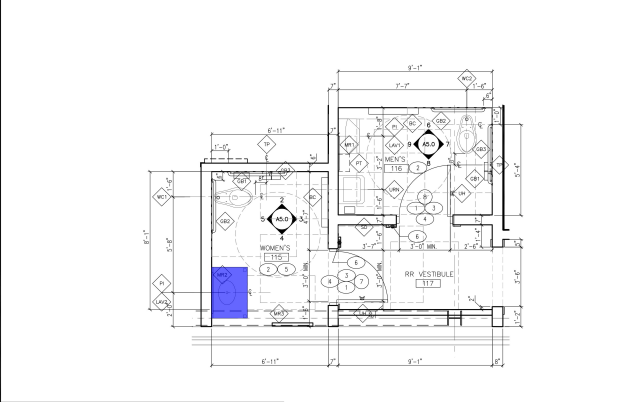
6 ELEVATION - MEN'S
A6.0 / SCALE: 3/8" = 1'-0"



7 ELEVATION - MEN'S
A6.0 / SCALE: 3/8" = 1'-0"



8 ELEVATION - MEN'S
A6.0 / SCALE: 3/8" = 1'-0"



1 ENLARGED FLOOR PLAN
A6.0 / SCALE: 3/8" = 1'-0"

FLOOR PLAN ACCESSIBILITY KEY NOTES

- 1. PROVIDE & INSTALL ADA-COMPLIANT ACCESSIBLE LATCHING DEVICE AND ACCESSIBLE DOOR PULL HARDWARE. RESTROOM ENTRANCE DOOR @ WC STALL.
- 2. ALL TOILET ROOM FIXTURES & ACCESSORIES SHALL BE MOUNTED TO ADA-COMPLIANT STANCHION MOUNTING TO HEIGHTS TO BE 8' LBS. MAX. OPERATING PRESSURE / MAXIMUM 5 SECOND SWEEP TIME FROM 90° FOR INTERIOR DOORS.
- 3. PROVIDE & INSTALL COAT HOOK MOUNTED AT 4'-0" A.F.F.
- 4. PROVIDE COVERED TRASH RECEPTACLE IN WOMEN'S RESTROOM.
- 5. PROVIDE & INSTALL ADA-COMPLIANT RESTROOM SCAQUE - SEE SHEET A6.1.

AAH ALAN HAHM ARCHITECTS P.C.
1000 WESTERN AVENUE - SUITE 1000
SHELTON, CONNECTICUT 06484

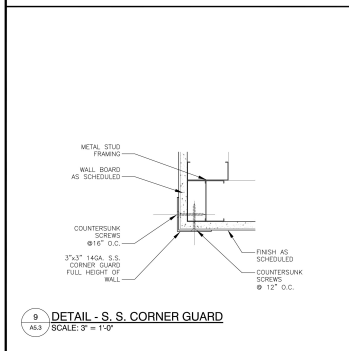
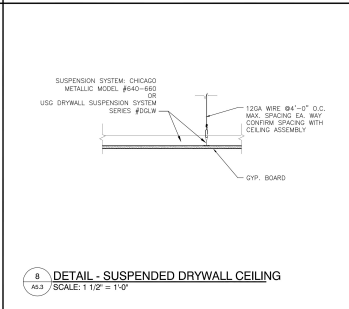
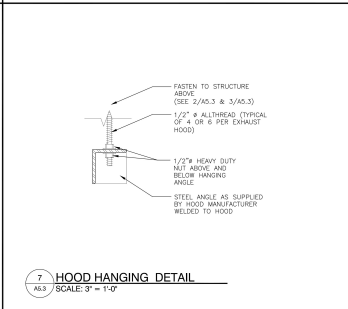
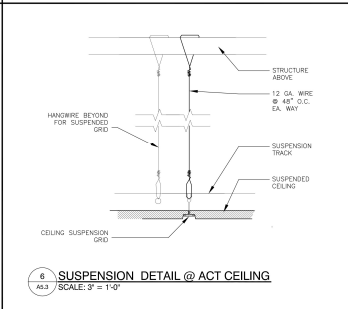
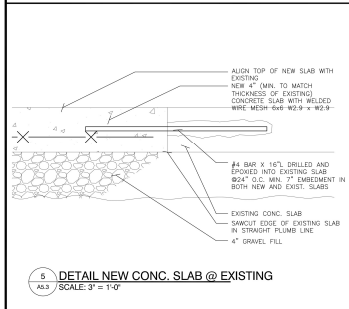
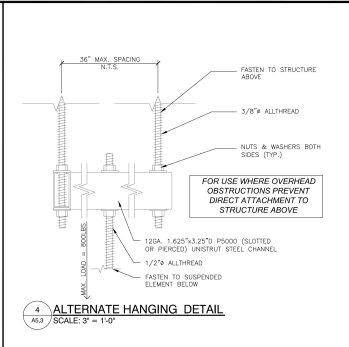
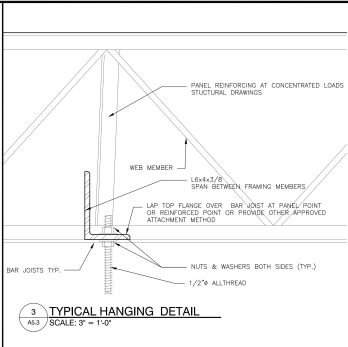
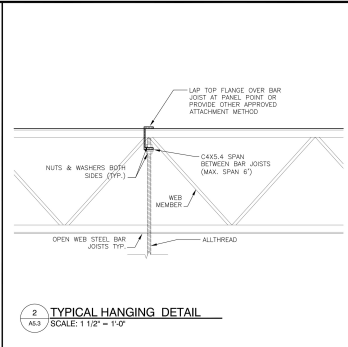
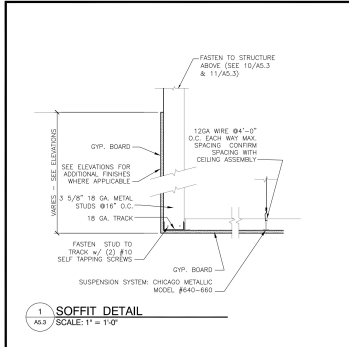
R.R. PLANS, ELEV. & DETAILS
MISSION BBQ SHELTON
1000 WESTERN AVENUE
SHELTON, CONNECTICUT 06484

MISSION BBQ

DATE: 10-14-19 PERMITS

© 2019 ALL RIGHTS RESERVED

PROJECT NO: 19007
DRAWN BY: KLLT/K
CHECKED BY: JWH
SCALE: A5.0



AAI ALAN HARR ARCHITECTS P.C.
1000 BRIDGEPORT AVENUE
SHELTON, CONNECTICUT 06484

INTERIOR CONSTRUCTION DETAILS
MISSION BBQ SHELTON
1000 BRIDGEPORT AVENUE
SHELTON, CONNECTICUT 06484

MISSION BBQ

DATE: _____
NO. IN / NO. PERMITS _____

© 2019. ALL RIGHTS RESERVED

PROJECT NO. 19017
DRAWN BY: RL11X
CHECKED BY: JWH
DATE: 08/20/19

A5.3

